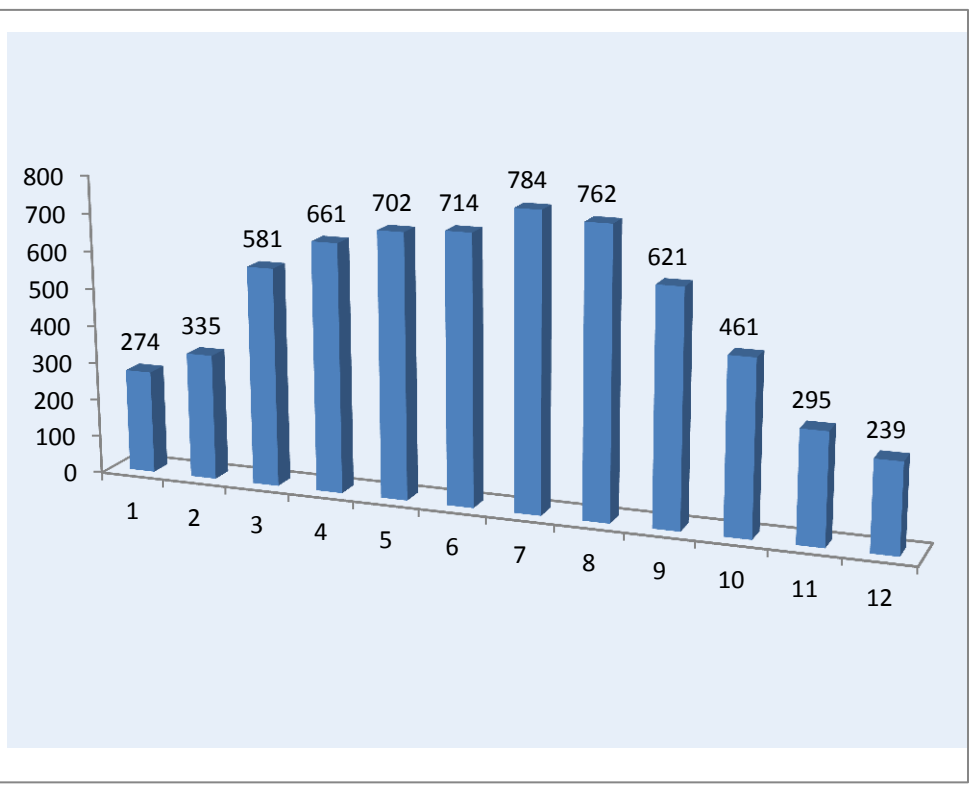
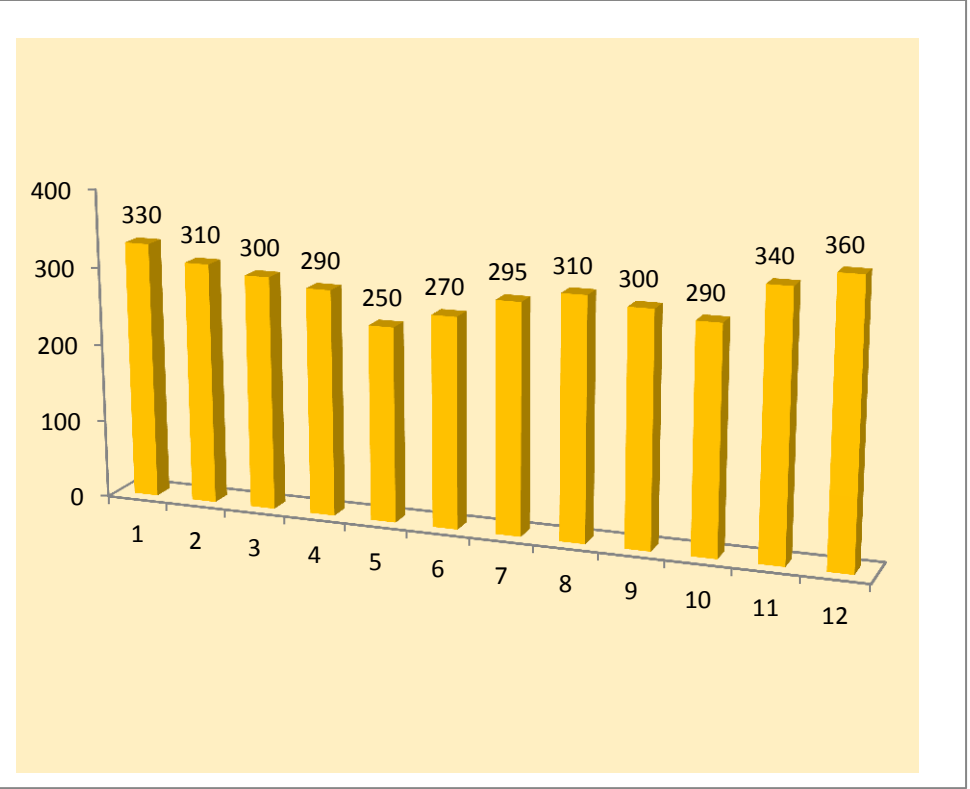
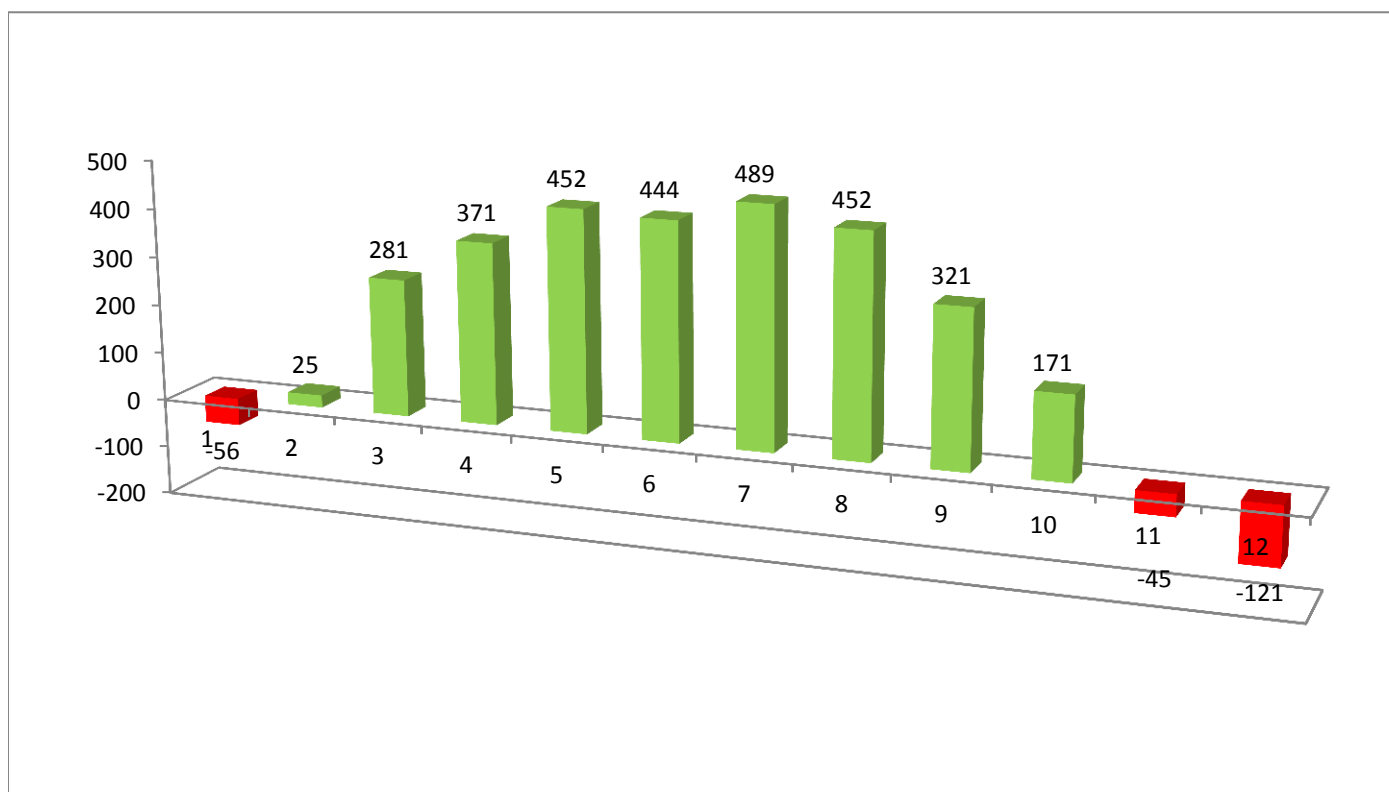



PRODUCTIE ENERGIE SISTEM FOTOVOLTAIC P=5kW	
VALOARE INVESTITIE=6.300 EURO	
SISTEM ON GRID 5 kWp	
LUNA	ENERGIE PRODUSA (kWh)
IAN	274
FEB	335
MAR	581
APR	661
MAI	702
IUN	714
IUL	784
AUG	762
SEPT	621
OCT	461
NOV	295
DEC	239
TOTAL	6.429




CONSUM LUNAR LOCUINTA	
MEDIE LUNARA=310kWh	
LUNA	ENERGIE CONSUMATA (kWh)
IAN	330
FEB	310
MAR	300
APR	290
MAI	250
IUN	270
IUL	295
AUG	310
SEPT	300
OCT	290
NOV	340
DEC	360
TOTAL	3.645





 = Energie consumata din retea = $222\text{kWh} \times 0,65 \text{ lei/kwh} = 202,4 \text{ lei}$

 = Productie fotovoltaica injectata in retea = $3.006\text{kWh} \times 0,22 \text{ lei/kWh} = 661,32 \text{ lei}$